



Empirical Energy: Scaling Alternative Energy

A Case Study Featuring PureWest Energy and Gunvor Group

CleanConnect.ai
Visual Automation

Downstream Buyers Want Certified Bio-Methanol, Bio-Plastics, Blue Hydrogen, LCFS, Low-CI LNG

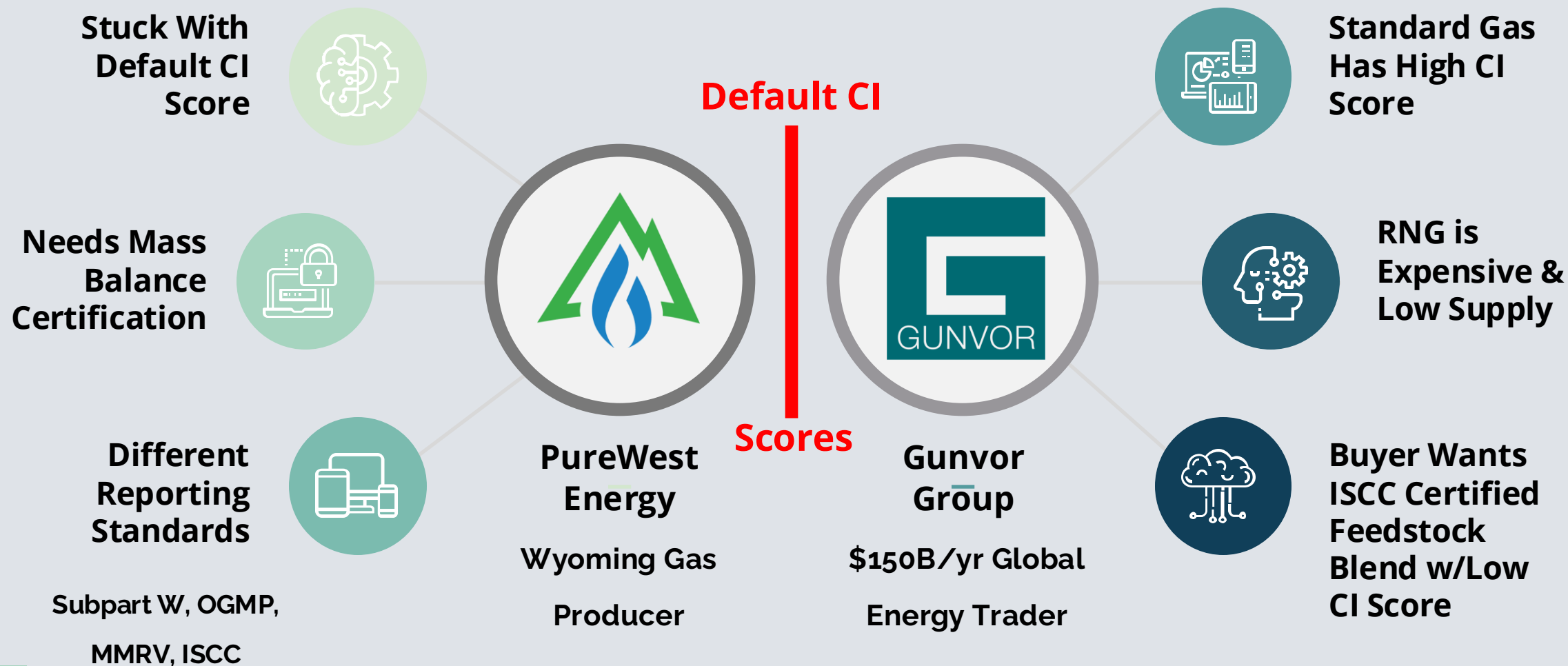


\$150B/yr Global Energy Trader



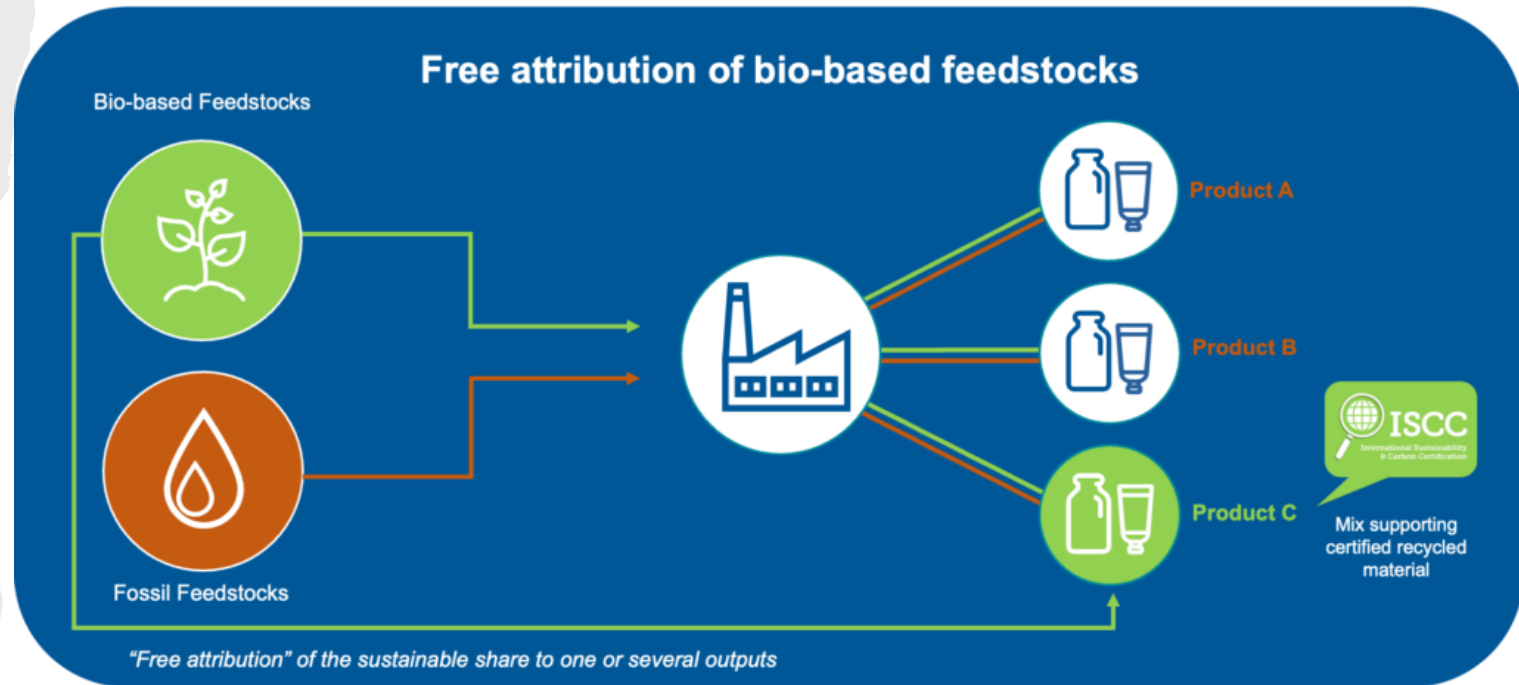
Challenges Between PureWest & Gunvor

Downstream Buyers Want Certified Bio-Methanol, Bio-Plastics, Blue Hydrogen, LCFS, Low-CI LNG



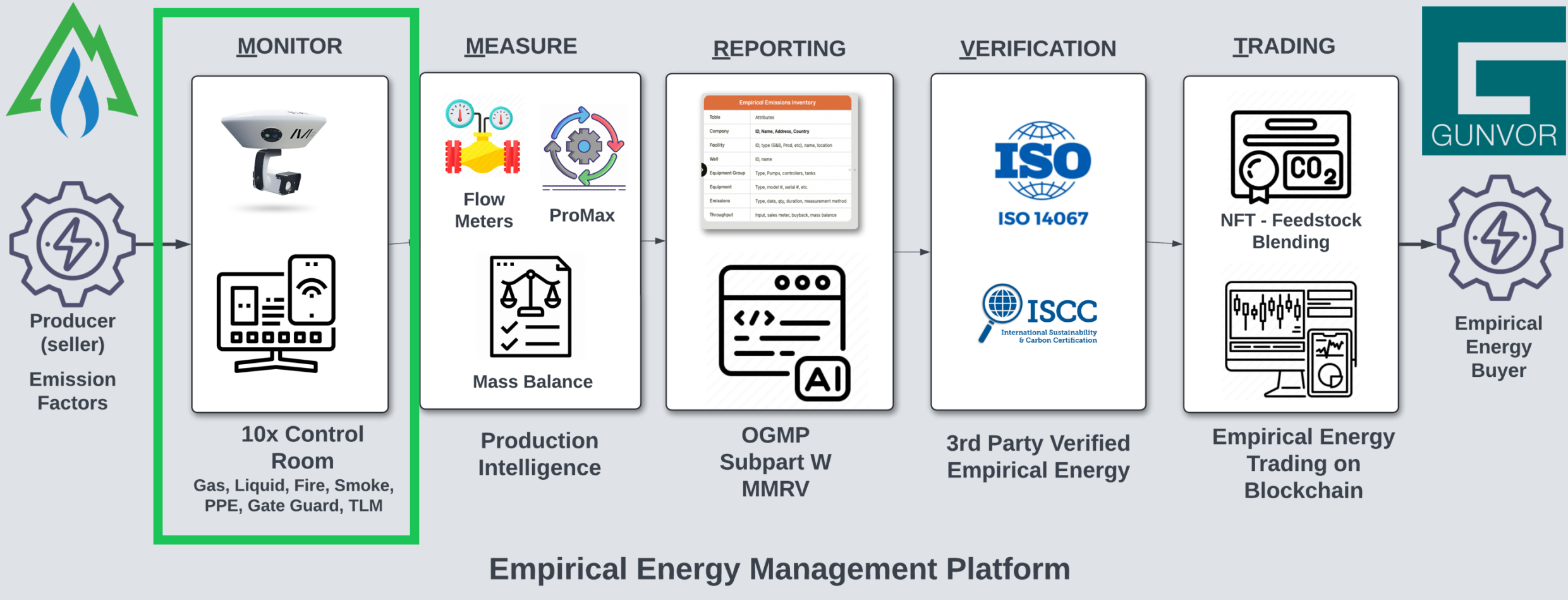
ISCC-PLUS

- Certified entity is allowed to handle certified feedstocks
- Each certified feedstock must be ISO 14067 with mass balance
- The entire supply chain must have data tracking, tracing and transparency
- The ETH blockchain and NFT's fit this data handling criteria



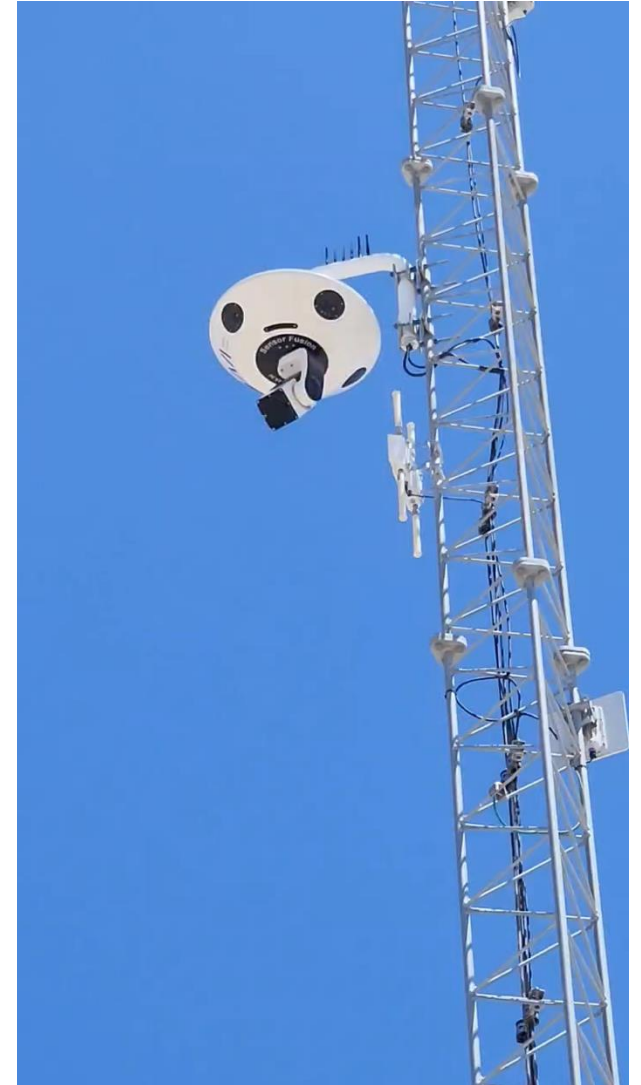
Empirical Energy Platform

Transforming Emission Factors into Empirical Energy



Minerva Camera Deployment

- Cameras installed by certified installers
- Camera placed on tower – 35-45 feet above site
- Connect via power-over-ethernet (POE)
- Configuration file sent to camera from digital twin
- Ready to start monitoring in minutes



Autonomous365 Dashboard Demo

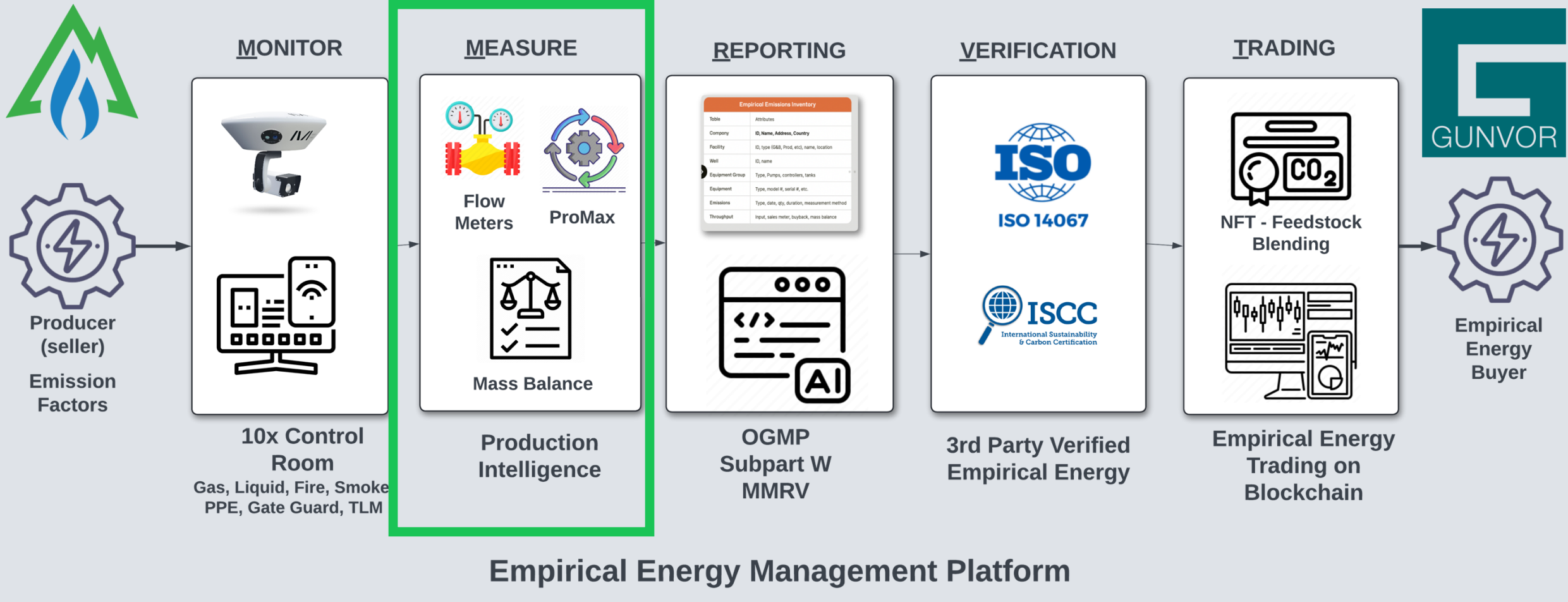
- Gas Leak
- Liquid Leak
- Fire/Smoke
- Hard hat
- Tank-level monitoring
- Method 22
- Gate Guard
- Live View

The screenshot displays the Autonomous365 dashboard interface. On the left is a sidebar menu with options: Devices, AI manager, Nodes, Customer settings, Recent activities, Live view, Deployment health, Statistics, System settings, and WebGL dashboard. The main area is titled 'Sensory Leak Finder' and shows a table of detected leaks. The table has columns for #, SNAPSHOT, LOCATION, ZONE, TIMESTAMP, RATE (MCF/D), and VOLUME (MCF). There are 11 rows of data, each with a small video snapshot thumbnail. A mouse cursor is hovering over the 'Zone08' entry in the 6th row.

#	SNAPSHOT	LOCATION	ZONE	TIMESTAMP	RATE (MCF/D)	VOLUME (MCF)
1		TP	"Zone12"	6:57 PM Sep 17, 2024	175.66	0.10
2		TP	"Zone11"	6:51 PM Sep 17, 2024	434.86	0.40
3		TP	"Zone10"	6:47 PM Sep 17, 2024	106.54	0.23
4		TP	"Zone09"	6:45 PM Sep 17, 2024	206.76	0.35
5		TP	"Zone07"	1:46 PM Jan 17, 2024	336.36	0.46
6		TP	"Zone08"	11:12 AM Jan 17, 2024	405.48	0.53
7		TP	"Zone05"	11:32 AM Jan 16, 2024	293.16	0.19
8		TP	"Zone06"	2:42 PM Jan 15, 2024	275.88	0.36
9		TP	"Zone04"	1:12 PM Jan 15, 2024	120.36	0.23
10		TP	"Zone02"	12:23 PM Jan 14, 2024	353.64	0.53
11		TP	"Zone03"	11:24 AM Jan 14, 2024	314.12	0.37

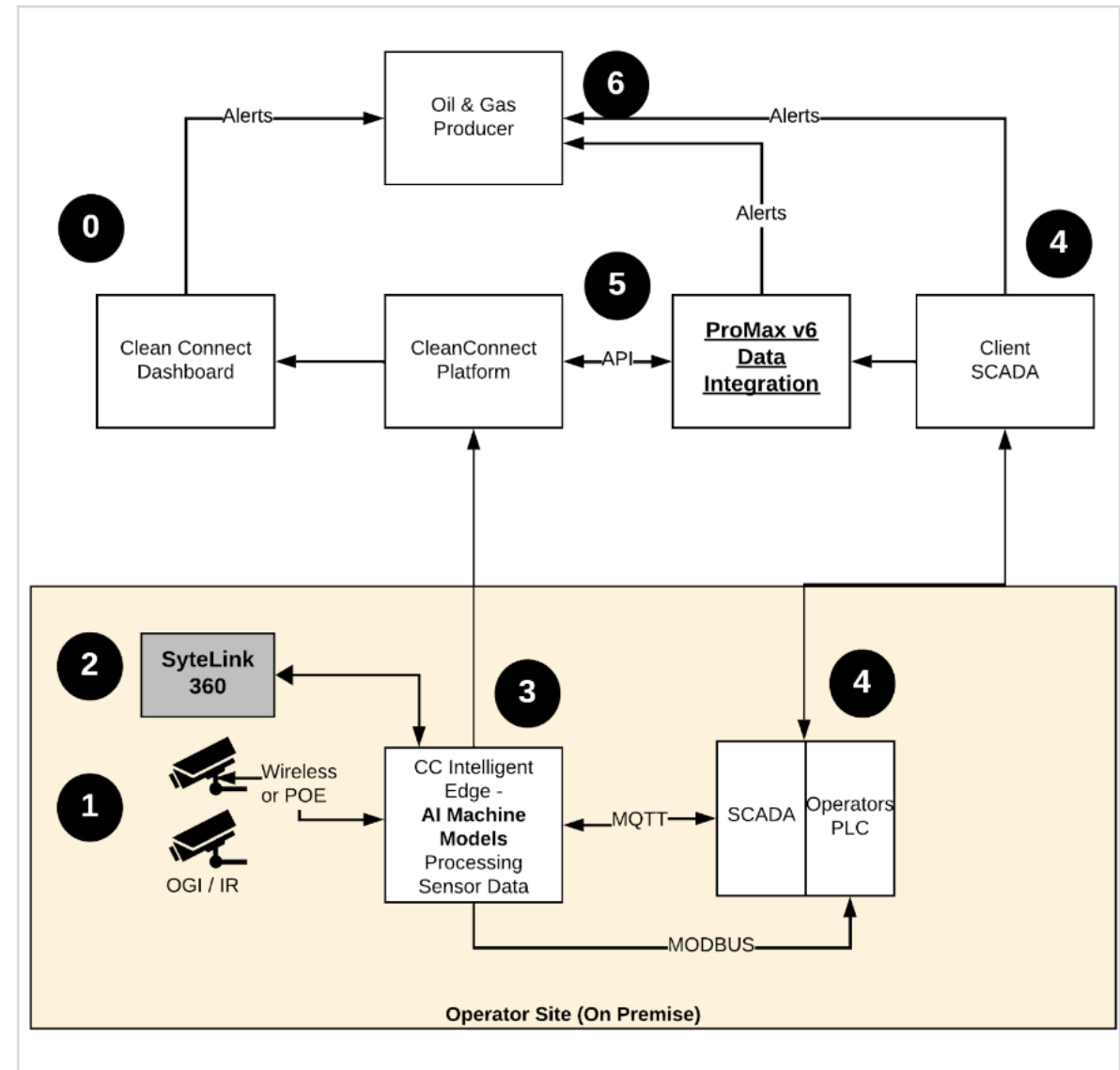
Empirical Energy Platform

Transforming Emission Factors into Empirical Energy



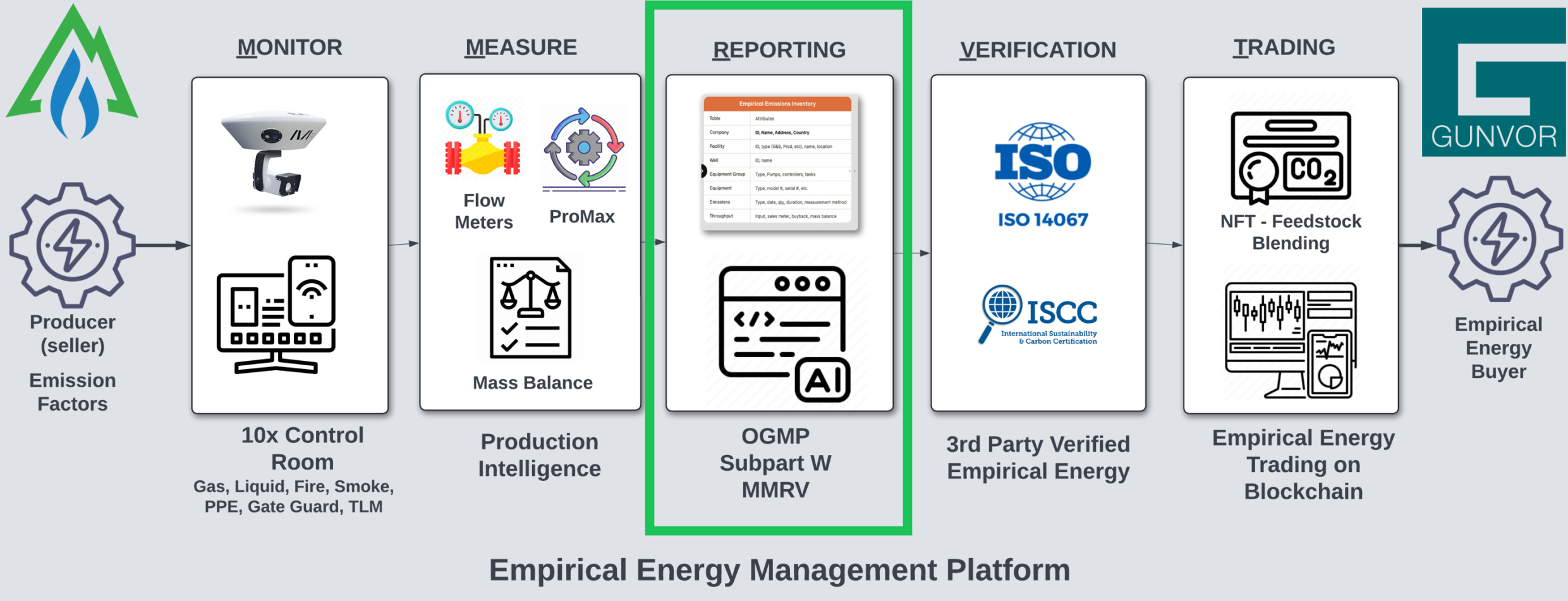
System Architecture

1. OGI cameras send raw data to edge
2. Optional: SyteLink360 sends data to edge
3. Edge device processes computer vision models
4. Integrated with SCADA via MQTT / Modbus
5. Data pushed/pulls from SCADA to Promax 6, then to Clean Connect platform
6. Alerts sent to O&G producer



Empirical Energy Platform

Transforming Emission Factors into Empirical Energy



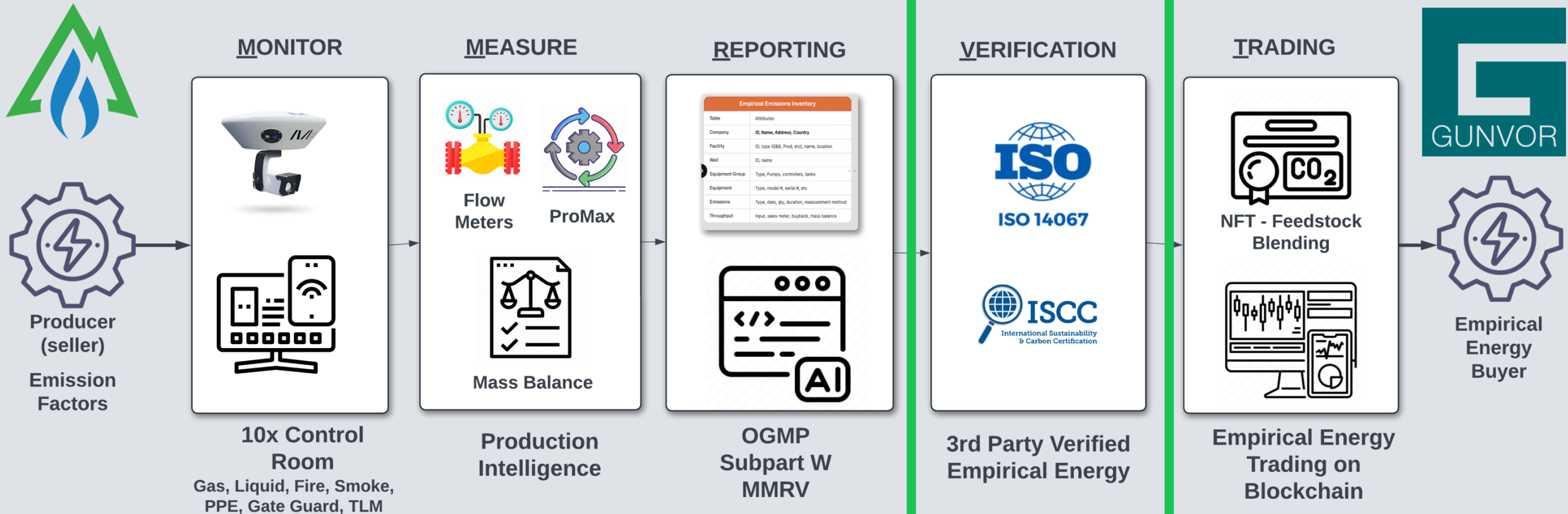
Comparing GHG Emission Inventories

11

DIFFICULTY				
Feature	Empirical Subpart W Waste Emission Charge	OGMP 2.0 Level 4/5	MMRV	ISCC
Prerequisite Compliance	Mandatory Reporting Rule Subpart W	Local Govt	Local Govt.	Local Govt.
Source-level Measurements	Method 1-5 (1=more accurate, 5=factors)	TBD	TBD	TBD
Site-level (Top-down) measured	n/a	Site & Source-level reconciliation required for Level 5	Site & Source-level reconciliation required for Level 5	Site & Source-level reconciliation required for Level 5
Baseline	<ul style="list-style-type: none"> Upstream: 0.2% CH4 intensity Midstream: 0.11% CH4 intensity Down: 0.05% CH4 intensity 	0.2% CH4 intensity (OGCI numbers)	0.2% CH4 intensity (OGCI numbers)	Empirically Measured Feedstock Determines CI Score
Fee (tax) for not hitting baseline	<ul style="list-style-type: none"> \$900/mT CH4 (2024) \$1200/mT CH4 (2025) \$1,500/mT CH4 (2026) 	None	EU CBAM	n/a
Annual Emissions Inventory Audit	TBD	By OGMP	n/a	n/a
Methodology Audit		By OGMP	ISO 14067 / 14064-3	ISO 14067 / 14064-3
Data Audit / Standard	Yes. 3 rd party. / TBD	Yes. OGMP/ TBD	ISO 14067 / 14064-3	ISO 14067 / 14064-3
Supply Chain Attestation / MMRV			ISO 14067	ISO 14067 w/Mass Balance
Data Requirements	Upload to EPA portal	Upload to OGMP portal	TBD	Tracking, Tracing, Transparency e.g. Blockchain / NFT

Empirical Energy Platform

Transforming Emission Factors into Empirical Energy



Empirical Energy Management Platform

Feedstocks

Biobased Feedstocks

Agricultural Biomass
Forest Biomass
Waste and Residues
(including agricultural, aquaculture,
fisheries and forestry residues)
Ligno-cellulosic Materials
Non-food cellulosic Materials

Recycled Carbon Feedstocks

Liquid and solid waste streams of non-
renewable origin or waste processing
and exhaust gas of non-renewable
origin

Non-biological Renewables

Energy derived from renewable
sources other than biomass

Market Applications

Food

Agricultural
Biomass for the
Food Production



Feed

Agricultural
Biomass for the
Feed Production



Industrial Applications

- Chemicals
- Packaging
- Plastics
- etc.



Fuels

▪ Biofuels, Bioliquids and Biomass Fuels

Including:

- Low iLUC-risk fuels
- High iLUC-risk fuels
- Advanced Biofuels (produced
from feedstocks listed in
Annex IX of the RED II)

▪ Recycled Carbon Fuels

- Renewable liquid and
gaseous Transport
Fuels of non-
biological Origin
(RFNBOs)



ISCC Systems

ISCC PLUS

Applicable to
Food
Feed

Industrial Applications

Energy and Fuels outside the EU (not regulated by the RED II)

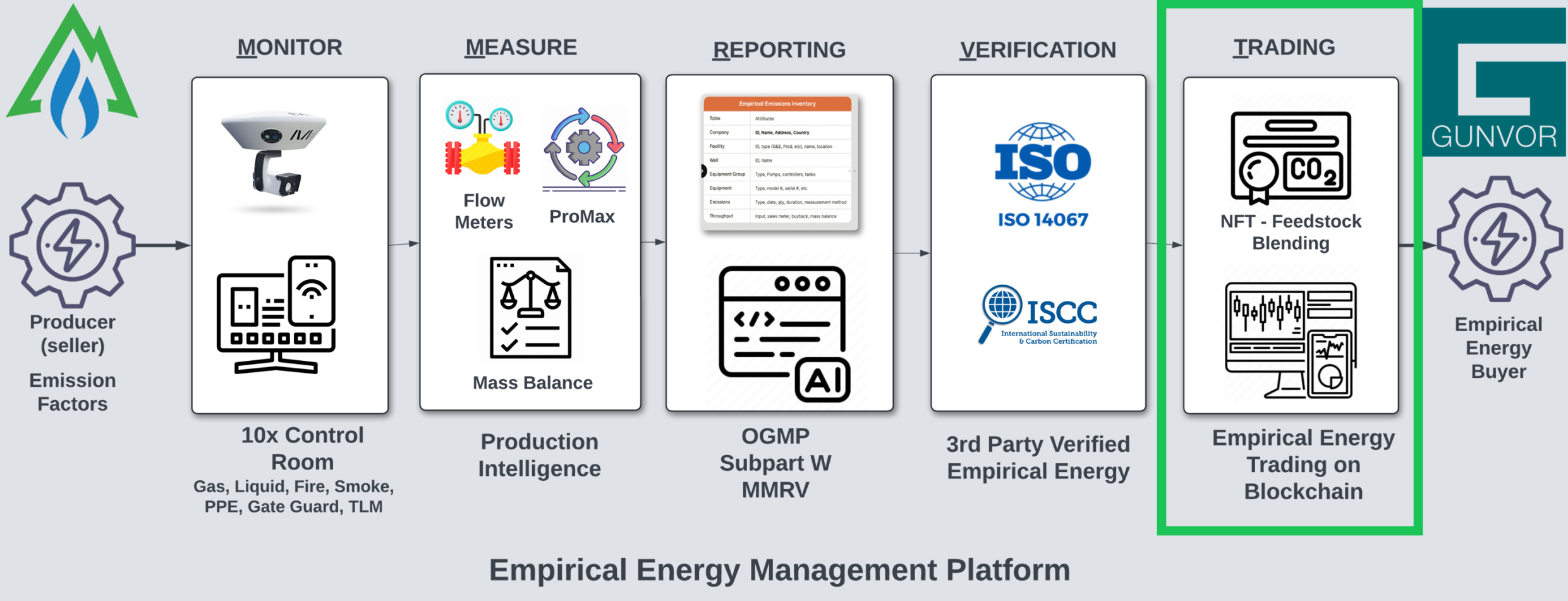
ISCC EU

Applicable to
Energy inside the EU
(fuels, electricity, heating, cooling)
(regulated by the RED II)

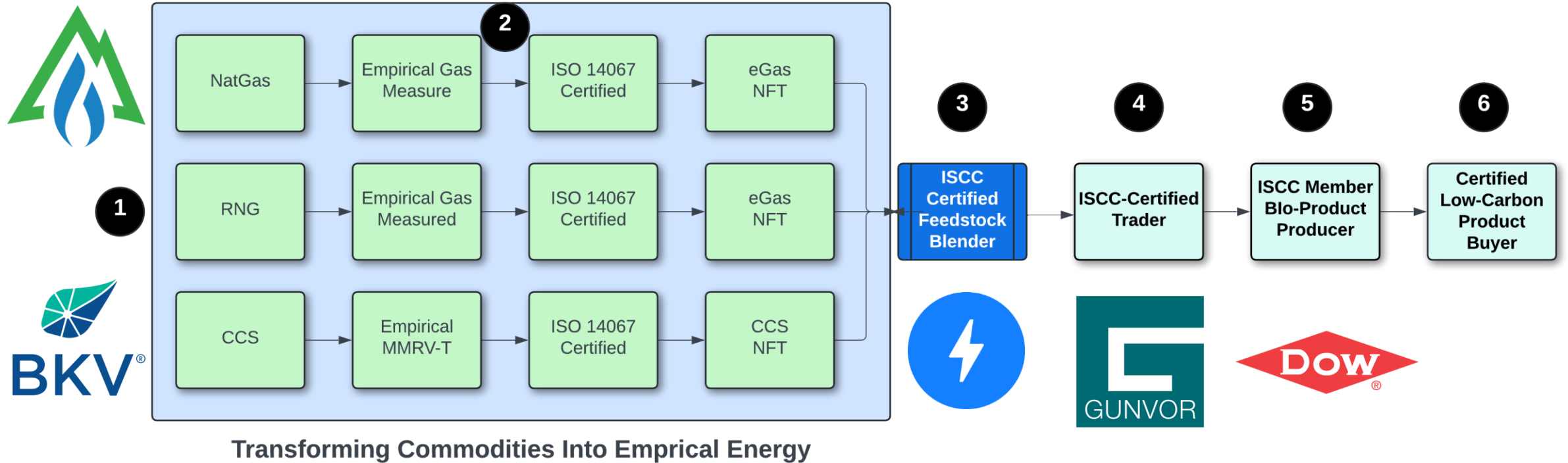
ISCC EU confirms compliance with the Sustainability
and GHG Saving Criteria of the RED II

Empirical Energy Platform

Transforming Emission Factors into Empirical Energy



Feedstock Blending Example



ProveZero Energy Trading Platform w/Feedstock Blending

ProveZero Gunvor Register Private Register Transaction History EnerGPT

All Purchased Blended Not assigned Assigned Closed Deals Burned

Multiple-choice Volume 2000 CI Score 100 Sort by: Date (DESC) Group by: None

<input checked="" type="checkbox"/> MN-12343 ⓘ 100	<input type="checkbox"/> S1-12343 ⓘ 100	<input checked="" type="checkbox"/> S2-12343 ⓘ 96	<input checked="" type="checkbox"/> S3-12343 ⓘ 96
Supplier Mangrove	Supplier Supplier-1	Supplier Supplier-2	Supplier Supplier-3
Quantity 10,000 MMBTU	Quantity 1802 MMBTU	Quantity 10,000 MMBTU	Quantity 10,000 MMBTU
Emission rate 2.0336e-07 MCF	Emission rate 2.0336e-07 MCF	Emission rate 2.0336e-07 MCF	Emission rate 2.0336e-07 MCF
Methane intensity 0.21%	Methane intensity 0.21%	Methane intensity 0.21%	Methane intensity 0.21%
Location USA	Location USA	Location USA	Location USA
—/mmbtu View Details	—/mmbtu View Details	—/mmbtu View Details	—/mmbtu View Details

Total MMBTU 25,000 | Clear All

New collection: GG-12344

Data blending Step 2: Data Certification Summary

Blended collection details

Item	Quantity
MN-12343 ⓘ	10,000 MMBTU
S2-12343 ⓘ	1,000 MMBTU
S3-12343 ⓘ	1,000 MMBTU

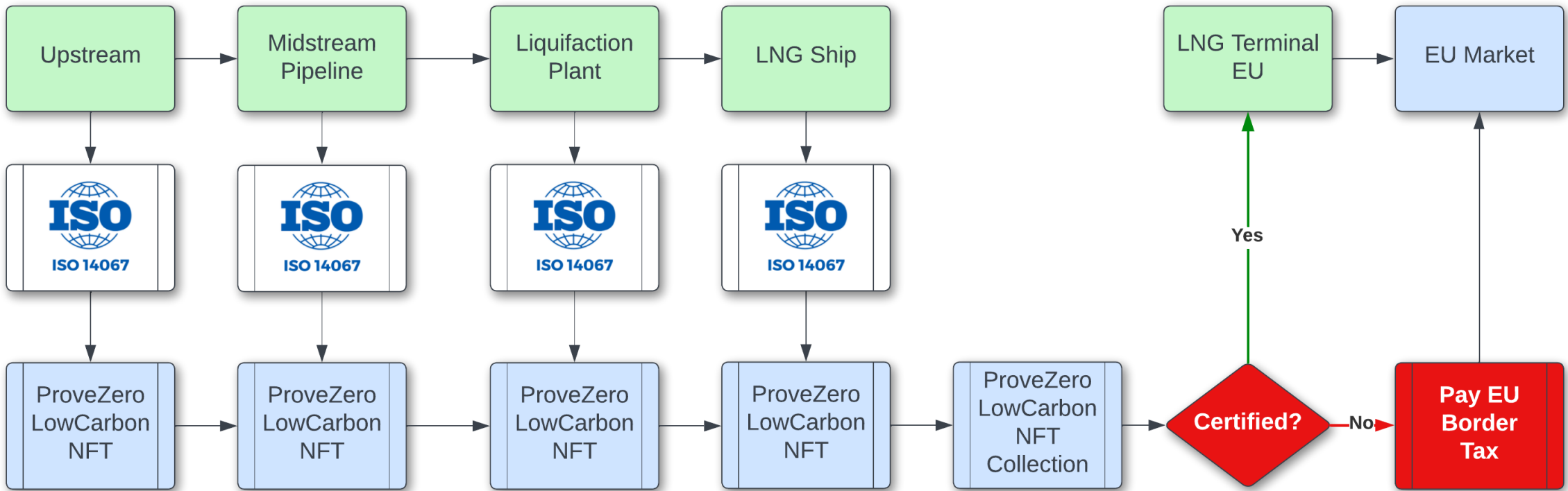
Total MMBTU 12,000

Data Certification Link Edit

Back Create blended collection

Use Case: LNG Trading

18-Countries Are Working on an MMRV framework for empirically measuring gas across the LNG supply chain



ProveZero Trading Platform Benefits to Gunvor

- Help with earning ISCC Certified trader status
- Access to certified feedstock
- Automated feedstock blending – certificate collections
- Built-in trading settlement system
- Built-in automated 3rd party verifier roles
- Integrates with CleanConnect.ai producer features/platform



Testimonial: The Empirical Energy Platform Benefits ALL PureWest's Stakeholders



Engineering

- Permits
- Site updates
- Digital Twin 2.0



Compliance

- Subpart W Reporting
- OGMP 2.0 Level 4|5
- OOOOb/c Autonomous LDAR



Operations

- Gas & liquid leak detection
- Autonomous Gate Guard
- Fire/smoke detection
- PPE Detection
- Tank level monitoring



Sustainability

- Tradeable tokenized energy
- ISO 14067 Certified
- SCS-115 Low-CI Certified
- ETH blockchain
- MMRV Trading



Marketing

- Premium Pricing
- Differentiated
- Certified
- Feedstock blending